

Sophos UTM Overview

Unified Threat Management makes security simple

Sophos UTM provides the ultimate network security package with everything you need in a single modular appliance. It simplifies your IT security without the complexity of multiple point solutions. The intuitive interface will help you quickly create policies to control security risks. And clear, detailed reports will give you the insight you need to improve your network performance and protection.

Highlights

- ▶ Every feature available on every appliance
- ▶ Firewall, VPN, ATP, IPS, email, web filtering and app control
- ▶ Hardware, virtualized, software or cloud-based appliance
- ▶ Intuitive browser-based interface
- ▶ Built-in reporting on all models
- ▶ Two-factor authentication with one-time password (OTP) in many areas
- ▶ Integrated wireless controller

Consolidated network security platform—no compromise

Protect your network using multi-layered proven protection technologies including Advanced Threat Protection (ATP), IPS, VPN, email and web filtering combined with the industry's simplest admin interface. We've engineered our software and hardware to give you the throughput speeds you need. And, you can choose the level of protection you need with modular subscriptions as every feature is available on every appliance.

All the Next-Gen Firewall features you need

We'll give you complete control to block, allow, shape and prioritize applications. Our Deep Layer-7 inspection (Next-Generation Firewall) ensures true application identification and has regular automatic updates. And you'll get feedback on unclassified applications too.

Intuitive management and detailed reporting

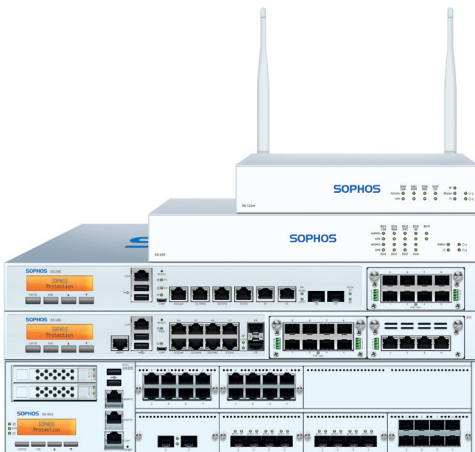
You'll know what's happening with your users and you'll have complete control over all the features you need, with none of the complexity. Easily build policies while getting detailed real-time and historical data with our on-box reporting, helping you to fix problems fast. And our Free Sophos UTM Manager lets you centrally administer several appliances through a single login.

Connect remote offices with easy VPN and Wi-Fi

Sophos RED (Remote Ethernet Device) provides secure remote access to your off-site locations. It's the first security gateway that requires no technical skills at the remote site. Once installed, it forwards traffic to the UTM for complete security. Sophos UTM also works as a wireless controller; access points are automatically set up and receive complete UTM protection.

"We chose Sophos UTM for its all-in-one approach, trouble-free installation and management at an affordable price."

Martin Bělohávek, Systems Administrator, MAN ČR, MAN Group



Choose your security applications

Our Linux-based OS includes a free Essential Network Firewall. It provides fundamental security like firewalling, networking tools, routing and secure remote access. And our modular approach lets you add layers of protection as your needs evolve.

UTM Network Protection stops sophisticated attacks that a firewall alone can't stop.

- ▶ ATP combines multiple technologies to identify and block outgoing traffic to command-and control hosts. Combine with Web to add cloud-based selective sandboxing to constantly improve protection
- ▶ Configurable intrusion protection system and flood protection against denial of service attacks
- ▶ IPsec and SSL tunnels provide flexible site-to-site and remote-access VPN connections

UTM Email Protection stops spam and viruses and keeps sensitive data safe.

- ▶ Provides simple infrastructure-free email encryption and policy-based DLP to protect sensitive data and easily stay compliant
- ▶ Let users manage their spam quarantine and search a personalized mail log
- ▶ Keep infected emails out of your mailbox and protect confidential emails against illegitimate access

UTM Wireless Protection gives you secure Wi-Fi in minutes.

- ▶ Easily setup wireless hotspots using backend authentication, vouchers or SMS
- ▶ Works better together with Sophos Mobile Control (SMC) to provide network access control for mobile devices

UTM Web Protection lets you protect your employees from web threats and control their time online.

- ▶ Easily create URL-filtering policies and enforce browsing quotas and time-based web surfing for individual users or groups
- ▶ Limit use of unwanted applications while giving priority to business critical resources
- ▶ Use the policy tester to check if your policy is working and create dynamic reports

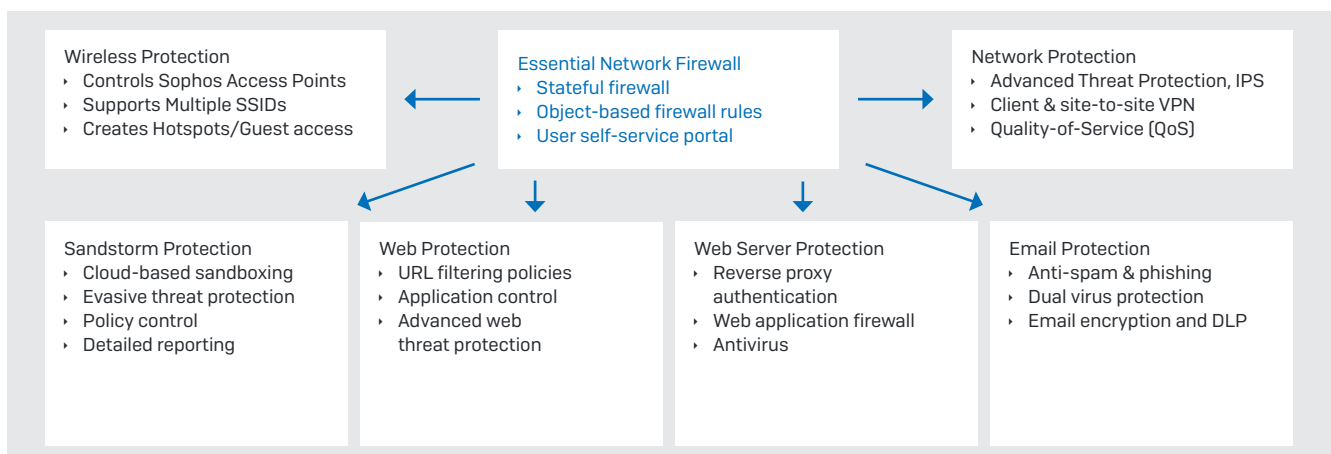
UTM Web Server Protection hardens web servers and apps ensuring compliance with a web application firewall.

- ▶ Reverse proxy authentication provides an added layer of security for enterprise applications
- ▶ Prevent hacking from SQL injection, cross-site scripting, directory traversal, cookie tampering and much more

UTM Sandbox Protection provides advanced cloud-based sandbox protection.

- ▶ Targeted attack protection, visibility, and analysis
- ▶ Blocks evasive threats with granular, incident based reports
- ▶ Cloud-based means no deployment or performance impact

Add modules when you need them



"With the Sophos appliances, we experienced greater productivity, reduced risk and costs savings."

William Strucke, Systems Manager, The Ohio State University

Choose your license

We give you the flexibility to license our protection modules individually. Or, you can choose one of our pre-packaged licenses. Whatever suits your needs.

	BasicGuard	FullGuard	FullGuard Plus
Modules - Choose the ones you need	Try It For Free	Try It For Free	Try It For Free
Essential Firewall - Free Network Firewall, NAT, Native Windows Remote Access	Full	Full	Full
Network Protection IPSec/SSL, ATP, VPN, IPS, DoS Protection	Basic	Full	Full
Web Protection URL Filtering, Application Control, Dual Engine Antivirus	Basic	Full	Full
Email Protection Anti-spam, Email Encryption and DLP, Dual Engine Antivirus	Basic	Full	Full
Wireless Protection Wireless Controller, Multi-SSID Support, Captive Portal	Basic	Full	Full
Webserver Protection Web Application Firewall, Reverse Proxy, Antivirus	-	Full	Full
Sandstorm Protection Cloud-based Sandboxing	Optional	Optional	Full

Our software bundles are also available in combination with an SG Series Appliance (hardware or virtual) as TotalProtect and TotalProtect Plus.

Extend your security

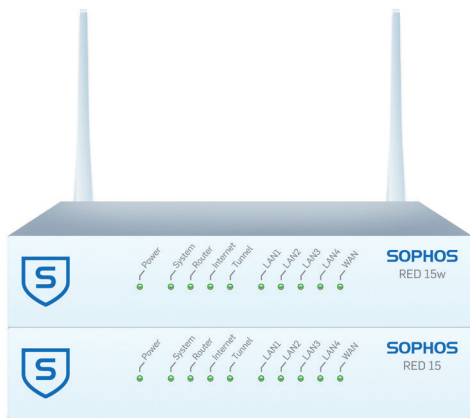
Sophos RED Simply secures your branch offices by forwarding all traffic to the central Sophos UTM. Installation requires no technical training and there is no ongoing maintenance.

Wi-Fi Access Points Configurationless access points are instantly protected by the UTM, letting you create secure mesh networks

VPN Clients Secure SSL, IPsec or our unique clientless HTML5 VPN provide mobile and home workers with secure remote access from any location at any time

Free UTM Manager Centrally manages multiple UTM devices through IPsec VPN tunnels; deploys policies in just a few clicks.

Sophos iView reporting appliance extends and enhances the on-box reporting with compliance reports, consolidated reporting across multiple UTMs, and long-term log management.



Improve Your Connectivity

Flexi Port Modules allow you to adapt the connectivity of your 1U or 2U appliance to changes in your environment

3G/4G Module add additional connectivity to any SG 125(w) or 135(w) unit using our add-on module

DSL Modem SFP pluggable modem to connect any SG 1xx(w) unit

2nd Wi-Fi Module add a 2nd radio to your SG 135w for better coverage and performance

Transceivers required for all modular SFP, SFP+ and QSFP+ interfaces

Enhance Your Reliability

Redundant Power Supply add a second power supply to any SG 1xx Desktop, 1U or 2U appliance



Choose how to deploy

You can choose to install on your platform of choice: hardware, software, virtual or even in the cloud.

SG Series

Our SG Series appliances are purpose-built devices with the latest technology to provide the ultimate in performance.

Software and Virtual

Install the UTM image on your own server hardware or your preferred virtual environment including VMware, Citrix, Microsoft Hyper-V and KVM.

Cloud

Sophos UTM is an industry leader and a preferred solution for securing Amazon Web Services network infrastructure.

SG Series [Small - Medium]

Hardware appliance	SG 105(w) Rev.3	SG 115(w) Rev.3	SG 125(w) Rev.3	SG 135(w) Rev.3	SG 210 Rev.3	SG 230 Rev.2
Firewall throughput	2500 Mbps	2700 Mbps	3100 Mbps	6000 Mbps	12 Gbps	14.5 Gbps
VPN throughput	325 Mbps	425 Mbps	500 Mbps	1000 Mbps	1 Gbps	2 Gbps
IPS throughput	350 Mbps	500 Mbps	750 Mbps	1500 Mbps	2 Gbps	3 Gbps
Antivirus throughput (proxy)	380 Mbps	500 Mbps	650 Mbps	1400 Mbps	500 Mbps	800 Mbps
Ethernet interfaces (copper)	(4) GE	(4) GE	(8) GE	(8) GE	(6) GE	(6) GE
Ethernet interfaces (SFP/SFP+)*	1 (shared)	1 (shared)	1	1	(2) GE	(2) GE
FleXi Port slots/Expansion bay	-	-	Modular Bay	Modular Bay	1	1
Optional Connectivity/ Flexi Port Modules*	DSL Modem (SFP)	DSL Modem (SFP)	DSL Modem (SFP) 3G/4G Module	DSL Modem (SFP) 3G/4G Module 2nd Wi-Fi Module (135w only)	8 port GE copper 8 port GE SFP 2 port 10 GE SFP+ 4 port 10 GE SFP+ 2 port 40 GE QSFP+ 4 port GE PoE 8 port GE PoE	

SG Series [Medium - Large]

Hardware appliance	SG 310 Rev.2	SG 330 Rev.2	SG 430 Rev.2	SG 450 Rev.2	SG 550 Rev.2	SG 650 Rev.2
Firewall throughput	19 Gbps	22 Gbps	28 Gbps	30 Gbps	45 Gbps	65 Gbps
VPN throughput	3 Gbps	4 Gbps	4 Gbps	5 Gbps	8 Gbps	10 Gbps
IPS throughput	5 Gbps	6 Gbps	7 Gbps	8 Gbps	12 Gbps	16 Gbps
Antivirus throughput (proxy)	1.2 Gbps	1.5 Gbps	2 Gbps	2.5 Gbps	3.5 Gbps	5 Gbps
Ethernet interfaces (copper)	(8) GE	(8) GE	(8) GE	(8) GE	(8) GE	(8) GE
Ethernet interfaces (SFP/SFP+)*	(2) GE/(2) 10 GE	(2) GE/(2) 10 GE	(2) 10 GE	(2) 10 GE	-	-
FleXi Port slots	1	1	2	2	4	6
FleXi Port modules (optional)*	8 port GE copper 8 port GE SFP 2 port 10 GE SFP+ 4 port 10 GE SFP+ 2 port 40 GE QSFP+ 4 port GE PoE 8 port GE PoE				8 port GE copper 8 port GE SFP 2 port 10 GE SFP+ 4 port 10 GE SFP+ 2 port 40 GE QSFP+	

* Transceivers (mini GBICs) sold separately

United Kingdom and Worldwide Sales
Tel: +44 (0)8447 671131
Email: sales@sophos.com

North American Sales
Toll Free: 1-866-866-2802
Email: nasales@sophos.com

Australia and New Zealand Sales
Tel: +61 2 9409 9100
Email: sales@sophos.com.au

Asia Sales
Tel: +65 62244168
Email: salesasia@sophos.com

Try it now for free

Register for a free 30-day evaluation
at sophos.com/try-utm